

# LeadingAge California

## Retirement Housing Options

**Joanne Handy RN,MS**

President and CEO  
LeadingAge California



# To Move or Not to Move?

- Only 5% of 55+ move any given year
- 50% of those stay in same county
- 70% > 65 live within 1 hour of child



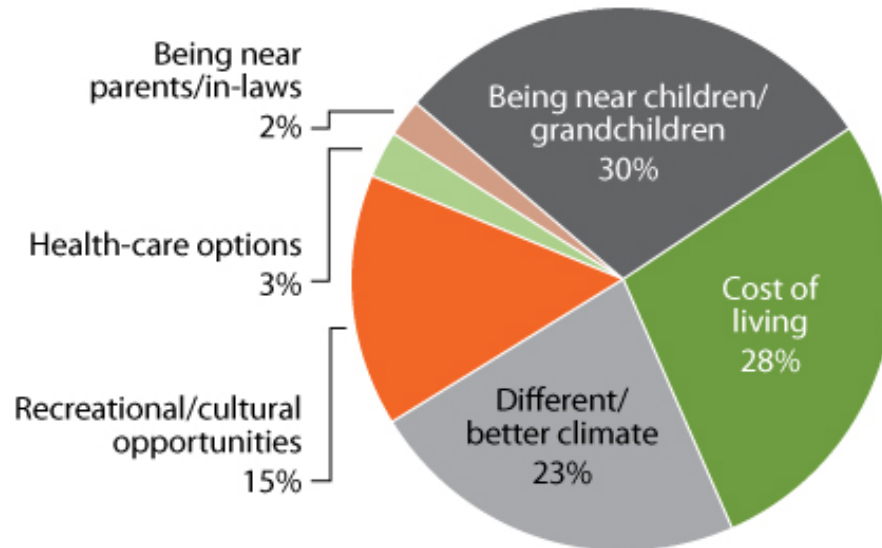
# Reasons to Move

- Neighborhood is not safe
- To be near children
- Match housing needs with abilities
- Home too costly to maintain
- Need assets tied up in the home
- Retired and seeking new lifestyle



# Why People Move

If you plan to move after retirement, what would be the most important factor? Here's how WSJ.com readers have responded



# Aging in Place

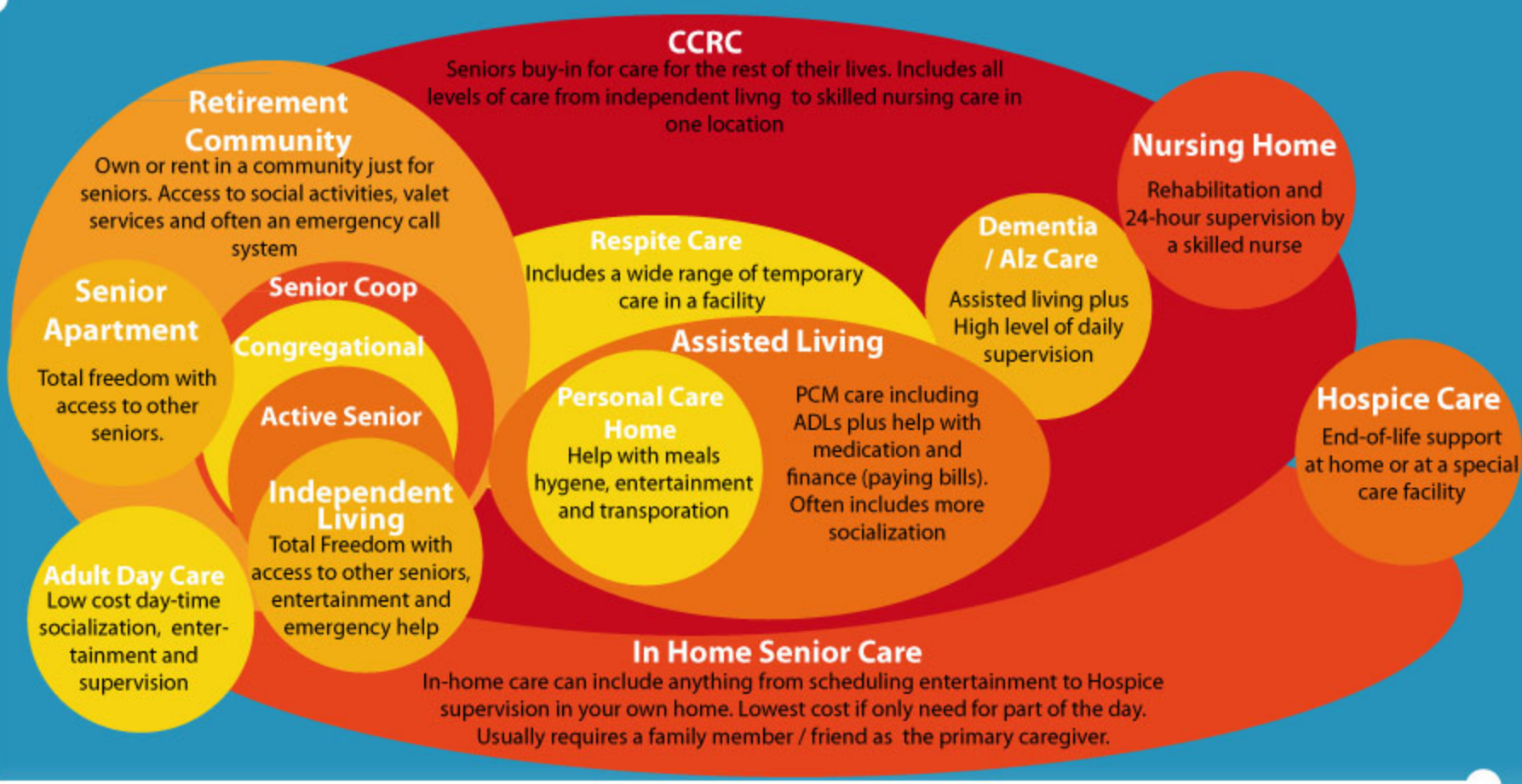
- Live in your own home safely, independently and comfortably
- Universal design
- Retrofit your home
- Certified Aging in Place Specialists (CAPS)

# Livable Communities

- Affordable housing, supportive services, and adequate mobility to foster independence and engagement
- Successful Aging – absence of disease/disability, intact cognitive functions, and *sustained engagement*



# The Senior Living Spectrum



## Level of Care And Supervision

This bubble graph shows how different types of senior care overlap and the relationship between the level of care and the cost.

# Active Retirement Communities

- Independent ownership or rental
- Age-restricted
- Focus on active lifestyle
- Social activities





# Affordable Senior Housing

- “Affordable” = below market rent
- Income qualified - less than 30% median income
- Independent apartments
- Meals not included
- May have on-site service coordinators



# Continuing Care Retirement Communities (CCRC)

- Independent, assisted living, and nursing care centers on the same campus
- Resident moves to different levels as needed
- Buy-in fee with various refunds available
- Monthly service fees
- Meals, housekeeping, transportation, recreation, wellness, health services all provided



# CCRC at Home

- CCRC security without moving in
- Services in your own home
- Access to specific assisted living or care center if needed
- Buy-in fees 70-90% less than CCRC
- Monthly fees
- Kendal at Home ([www.kendalathome.org](http://www.kendalathome.org))

# Assisted Living Communities

- Provide assistance with daily activities
- Mobility, personal care, housekeeping, medications and general monitoring
- Average SF price \$39,732 per year
- Do not provide medical care



# Residential Care Homes

- Assisted living in a smaller setting
- Many are single family residences
- May offer dementia-specific services



# Nursing Care Centers

- Technical term is skilled nursing facility
- Residents require 24 hour care/supervision and medical services
- Average SF price private room = \$157,680/yr
- Medicare does not cover ongoing
- MediCal covers for income qualified
- Long term care insurance



# Membership Models

- Live Well at Home with Eskaton ([www.eskaton.org](http://www.eskaton.org))
- Judson ([www.judsonsmartliving.org](http://www.judsonsmartliving.org))



# The Village Movement

- Aging-in-place assistance
- 50 active villages
- Membership fees: \$0 - \$600
- Paid and volunteer services
- Technology-assisted



# The Future

Choices

**Choices**

**And More Choices!**